



Events

[Current Events](#)
[Lectures](#)
[Events Archive](#)

Beowulf Boot Camp

Beowulf Boot Camp for Louisiana High School Students, BRCC Students, & Louisiana Teachers

June 26-30, 2017

Louisiana State University

****Now open to Middle School Students****

The [LSU Center for Computation & Technology \(CCT\)](#) will host the ninth [Beowulf](#) Boot Camp, June 26-30, on the LSU campus. This exciting course offers students and teachers a unique opportunity to work with advanced research technology not usually available in a typical classroom setting.

During Beowulf Boot Camp, students will work hands-on with a number of LSU professors as they learn how to build and use supercomputers. Regular participants include: [Dr. Steven Brandt](#), a computational scientist in the CCT who specializes in programming; [Dr. Jim Chen](#) who studies hurricanes, tsunamis, and coastal science; [Dr. Peter Diener](#), who uses supercomputers to simulate colliding black holes; and when available, [Dr. Thomas Sterling](#), a former NASA scientist who invented the Beowulf supercomputing cluster.

Students will engage in the following activities:

- building a computer cluster from scratch
- installing the Linux operating system on the computer they've built
- connecting computers put together by their peers to make a mini-supercomputer
- learning how to program a mini-supercomputer in parallel with Python
- interactive activities to help understand how Parallel computing works in Supercomputing

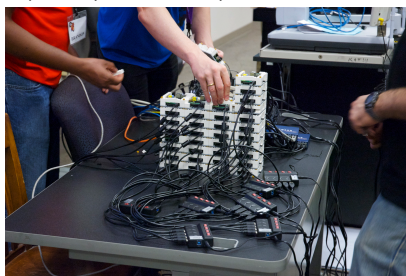
WHO: Louisiana Middle-High School Students, BRCC* Students, and Louisiana Teachers

*BRCC = Baton Rouge Community College

This camp is introductory so students do not need a strong computational science background to participate. Some knowledge of programming a plus.

Note to Teachers: The content of this workshop is eligible for up to 25 hours of CLUs (Continuing Learning Units). Participants must complete the entire course for the full 25 hours. With the certificate and the agenda from the workshop, participants should apply to their parish school board for CLU credits. An individual's school district gives final approval for awarding of CLUs.

For more information on the Beowulf Boot Camp and its curriculum, [click here for a sample itinerary](#).



REGISTRATION & COST: \$130.00. Supplies, breakfast, lunches and snacks are provided during the camp. Participants are responsible for arranging their own transportation to and from LSU's campus. Dorm option available. CCT will accept participants on a first-come, first-serve basis. Limited seats available so register early. [Click here to register!](#)

Dorm information (additional cost to participants):

\$195.00 per individual, double occupancy

\$280.00 per individual, single occupancy

Check in on Sunday, June 25 (3:00 pm), Check out on Friday, June 30. Linen included. Dorm participants must bring their own funds for dinner. A dorm counselor will guide those in the ages of 14-17 group to a nearby restaurant for dinner each night. A dorm counselor will remain with the minor group at all times during the night, and will escort them to class each morning.

WHERE: Louisiana State University, Digital Media Center, 340 East Parker Street, Baton Rouge, LA 70803. [Map it!](#)

SCHEDULE: 9:00AM - 3:30 PM, with an optional high-performance camp family night on Friday evening, 5:00 PM - 6:30 PM.

[TENTATIVE - CLICK HERE](#)

SPONSORS:



Center for
Computation & Technology



[DDN Storage](#)

For questions or special needs, contact Karen Jones at kjones@cct.lsu.edu.

For all LSU Center for Computation & Technology summer camp information, visit <https://www.cct.lsu.edu/cct-events>. For a listing of other LSU pre-college camp offerings visit: www.lsu.edu/camps.



Center for Computation & Technology

2003 Digital Media Center • Telephone: +1 225/578-5890 • Fax: +1 225/578-8957

© 2001–2025 Center for Computation & Technology • Official Web Page of Louisiana State University.